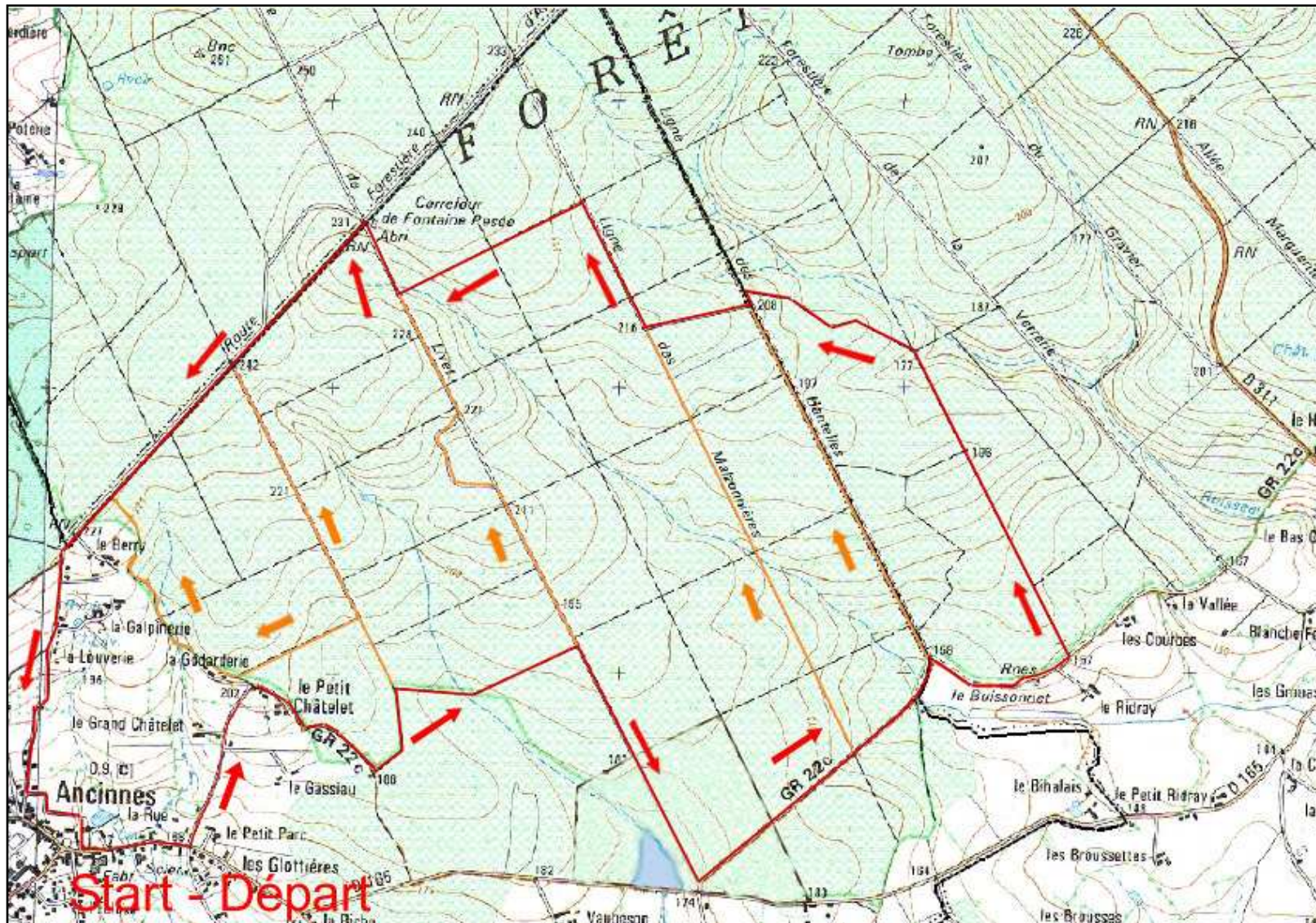


1.0km

2.0km

3.0km

4.0km



ANCINNES PERSEIGNE WALKS

All walks include forest paths - walking boots are recommended, particularly in wet conditions.
NB They are not signposted.

The longest walk, marked in red, is approximately 12km.

Other routes are marked in orange and are between 3.5km and 11km.

ANCINNES PERSEIGNE RP

Ces circuits empruntent des chemins forestiers et les sentiers au bord des parcelles.
NB Ils ne sont pas balisés.

Le circuit le plus long (rouge) est de 12km.

Les autres circuits d'Ancinnes (orange) sont entre 3.5km et 11km de longueur.

1.0km

2.0km

3.0km

4.0km